



U.S. Customs and Border Protection

Wood Packaging Material Trade Outreach



U.S. Customs and
Border Protection

October 2018

1



Overview

- ❖ Impacts as a result of non-compliant WPM (NC WPM)
- ❖ Purpose and importance of WPM regulations
- ❖ Compliant WPM
- ❖ Non-Compliant WPM
- ❖ What you can do to comply with ISPM15



Impacts from NC WPM

Threats posed by WPM

- ❖ Significant pest risk
- ❖ Billions of dollars of damage
- ❖ Increased costs



Impacts from NC WPM



Asian Longhorn Beetle Damage



U.S. Customs and
Border Protection

October 2018



Impacts from NC WPM



Emerald Ash Borer Damage



U.S. Customs and
Border Protection

October 2018

5



Impacts from NC WPM



Through 2011, over 50 million trees have been cut down due to Emerald Ash Borer infestation.

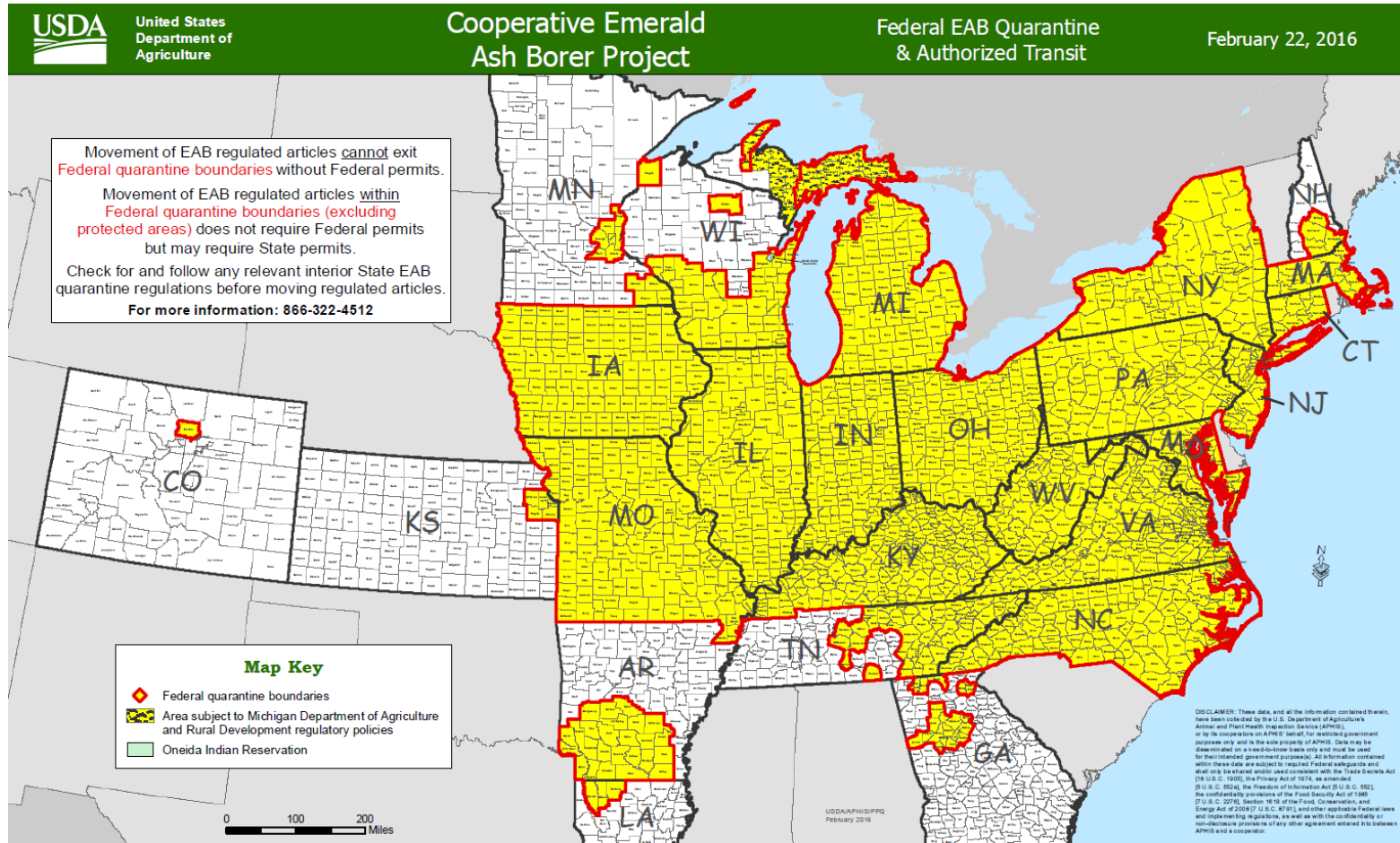


U.S. Customs and
Border Protection

October 2018



Impacts from NC WPM



**U.S. Customs and
Border Protection**

October 2018



WPM Regulations

International Standards for Phytosanitary Measures (ISPM 15) – Regulation for Wood Packaging Material in International Trade

- ❖ Wood may be infested
- ❖ WPM a viable pathway for pest introduction
- ❖ Intent – significantly reduce the risk of introduction and spread of most quarantine pests associated with WPM



WPM Regulations

Wood packaging material is defined as:

Wood or wood products (excluding paper products) used in supporting, protecting, or carrying a commodity (includes dunnage).



WPM Regulations

Wood packaging material include, but it is not limited to:

Bins

Boxes

Bracing

Cable Spools

Cases

Crates

Dunnage

Load Boards

Pallets

Pallet collars

Skids



WPM Regulations

In general, WPM does not include:

- ❖ WPM made entirely from thin wood 6 mm or less in thickness.
- ❖ WPM made wholly of processed wood material, such as plywood, particle board, oriented strand board or veneer that has been created using glue, heat or pressure, or a combination thereof.
- ❖ Sawdust, wood shavings and wood wool.



Examples of WPM

Pallets



Boxes



Bracing



Examples of WPM

Dunnage / Bracing



U.S. Customs and
Border Protection

October 2018

13



Examples of WPM

Dunnage / Bracing



U.S. Customs and
Border Protection

October 2018



Examples of WPM

Crates



Examples of WPM

Crates



Examples of WPM

Bracing



U.S. Customs and
Border Protection

October 2018



Examples of WPM

Bracing



U.S. Customs and
Border Protection

October 2018



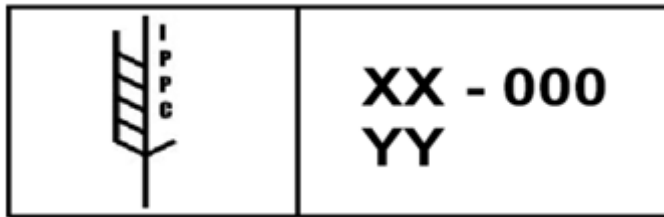
Examples of WPM

Pallets



Compliant WPM

Valid logo



- ❖ Valid IPPC logo
- ❖ No presence of WPM pests
- ❖ No indication of WPM pests



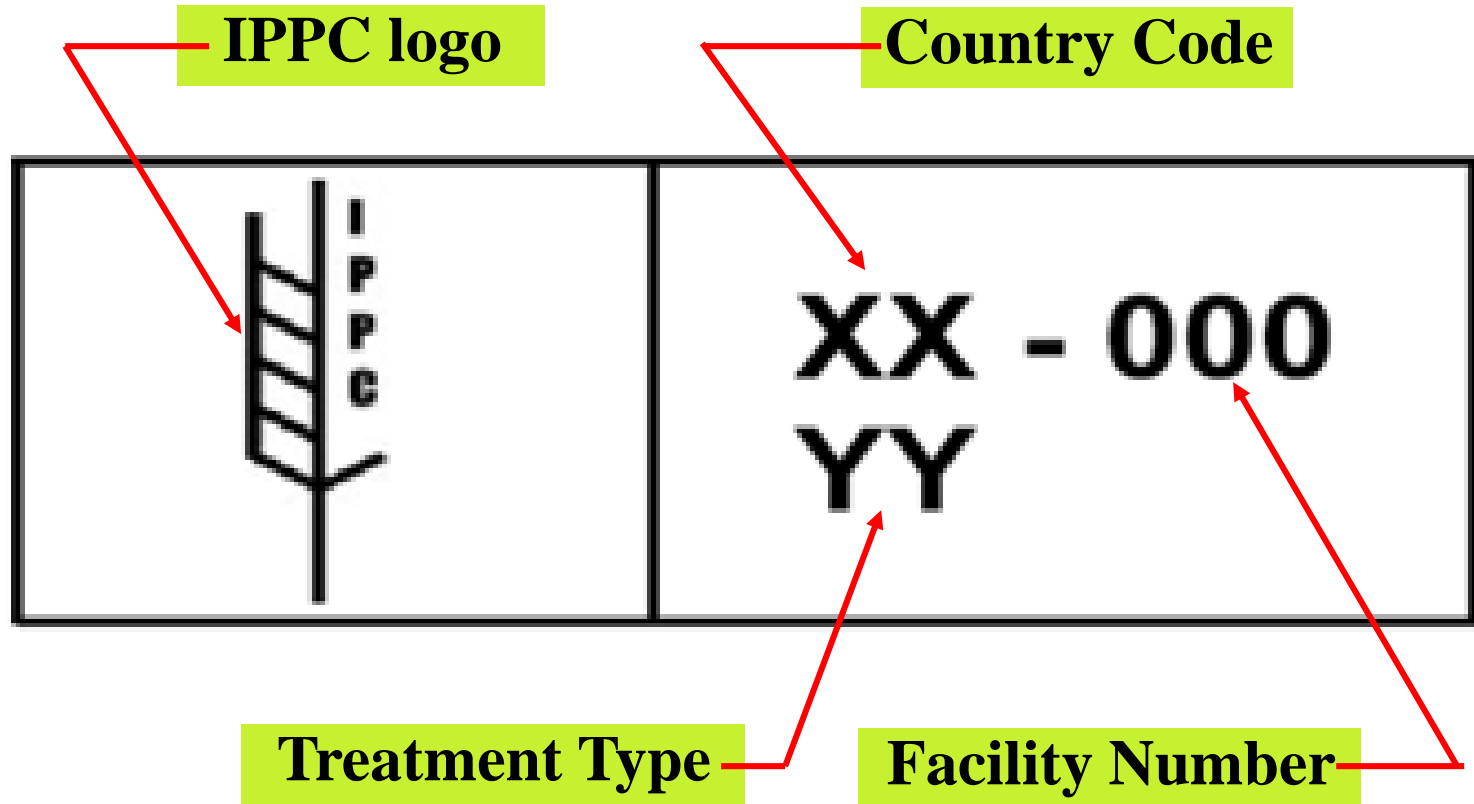
U.S. Customs and
Border Protection

October 2018

20

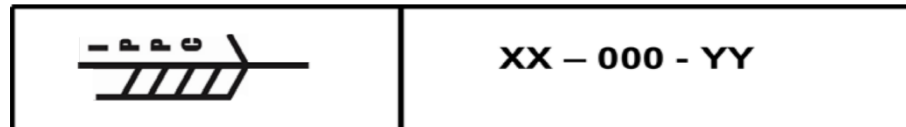
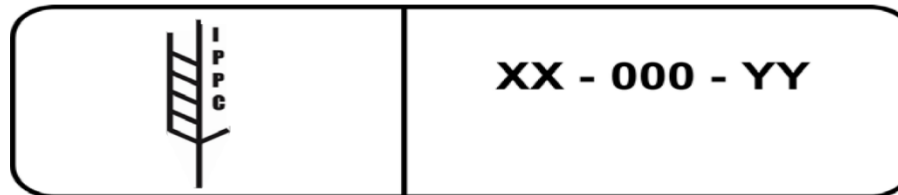
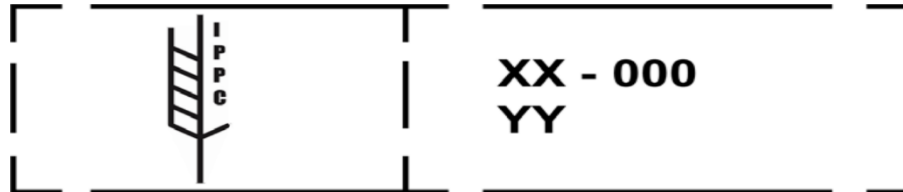
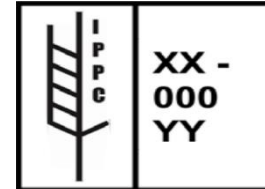
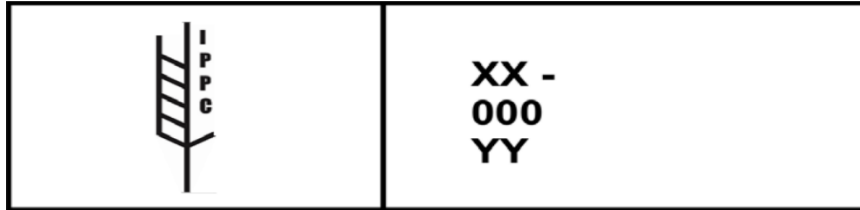


International Plant Protection Convention (IPPC) Logo



WPM Regulations

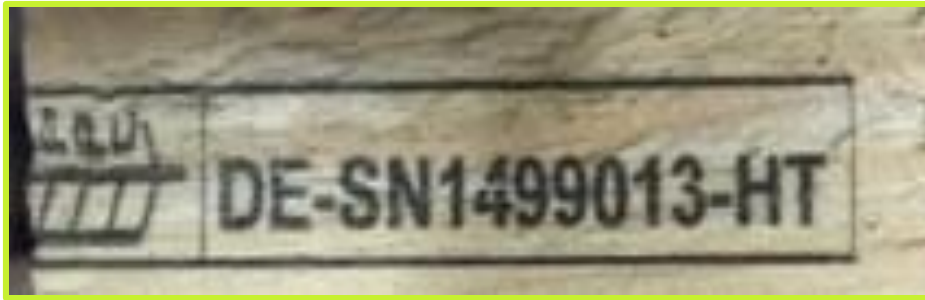
Compliant Markings Variations



Correct IPPC Logo



Correct IPPC Logo



Pests of Concern

Buprestidae	Metallic beetles
Cerambycidae	Long horned beetles
Cossidae	Carpenter moths & Leopard moths
Curculionidae	Bark weevils
Platypodidae	Pinhole borers
Scolytinae	Bark beetles (most common intercept)
Sesiidae	Clearwing moths
Siricidae	Wood wasps



Comparative Insect Sizes



Bark Beetle



Siricidae Larvae



Buprestid larva

Pests of Concern

SPRUCE ENGRAVER BEETLE
(*ips typographus* (L.))



U.S. Customs and
Border Protection

October 2018



Commodities with Highest Incidence of WPM Pests



U.S. Customs and
Border Protection

October 2018



Commodities with Highest Incidence of WPM Pests

Top High Risk Commodities

- ❖ Manifested WPM
- ❖ Machinery (including Auto Parts)



Commodities with Highest Incidence of WPM Pests

Top High Risk Commodities

- ❖ Metal Products
- ❖ Stone Products (including tile)



Commodities with Highest Incidence of WPM Pests



Additional High Risk Commodities

1. Electronics/Electronic Components
2. Finished Wood Articles
3. Plant Products and Foodstuffs



Indicators of WPM Pest Presence



Indicators of WPM Pest Presence



Non-Compliant WPM



❖ Inappropriately marked WPM



U.S. Customs and
Border Protection

October 2018

34



Non-Compliant WPM



❖ Inappropriately marked WPM



Non-Compliant WPM



❖ Inappropriately marked WPM



U.S. Customs and
Border Protection

October 2018

36



Non-Compliant WPM



❖ Unmarked WPM



Non-Compliant WPM



❖ Unmarked WPM



Non-Compliant WPM



❖ Unmarked WPM



U.S. Customs and
Border Protection

October 2018

39



Non-Compliant WPM

- ❖ Infested with or shows evidence of pests



October 2018

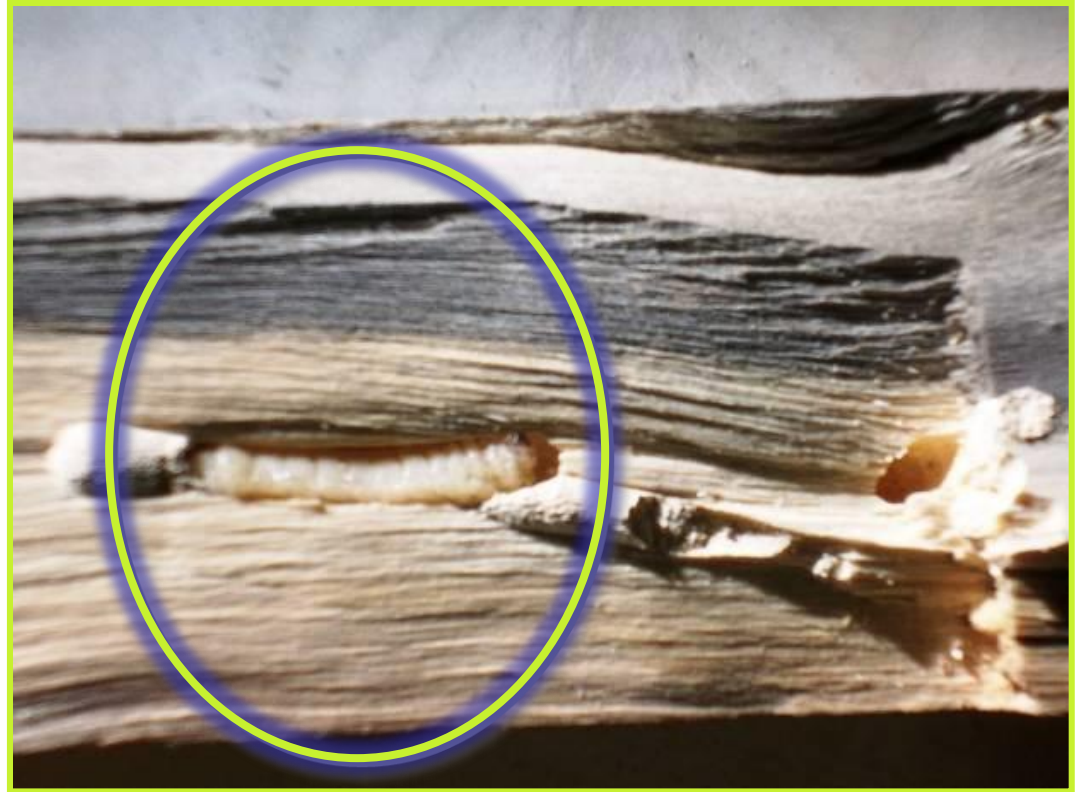
Non-Compliant WPM

- ❖ Infested with or shows evidence of pests



Non-Compliant WPM

- ❖ Infested with or shows evidence of pests



Non-Compliant WPM



❖ Bark



U.S. Customs and
Border Protection

October 2018

43



Non-Compliant WPM



❖ Bark



U.S. Customs and
Border Protection

October 2018

44



New/Old/Mixed WPM

Condition of WPM

❖ New

- Fresh; green; sap visible
- High pest probability

❖ Old

- Very low moisture content, re-used
- Visually damaged
- Low pest probability

❖ Mixed

- Combination of above



New wood added

Old stamped
(bearer) wood



U.S. Customs and
Border Protection

October 2018



What Can You Do to Comply with ISPM 15 ?

- ❖ Ensure your WPM provider is accredited ISPM 15 compliant
- ❖ Educate your supply chain on the ISPM 15 requirements
- ❖ Know alternatives to WPM – Cost Benefit Analysis
- ❖ Remember there is a financial cost for noncompliance



Benefits of Compliance

- ❖ Fewer delays for cargo release
- ❖ Less demurrage charges due to cargo holds
- ❖ Avoidance of penalties for violative WPM



Cost of Noncompliance

- ❖ WPM that does not have the ISPM 15 stamp must be exported
- ❖ WPM with the ISPM 15 stamp but found to contain a wood boring insect must be exported
- ❖ WPM with the IPSPM 15 stamp but found with a hitchhiking pest (non-wood boring) may be fumigated by APHIS/PPQ



Self-Report to Assist CBP

- ❖ CBP would like the trade community to assist with minimizing the risk of untreated or inadequately treated WPM that enters the US without CBP detection.



Why Self-Report Noncompliant WPM?

- ❖ Foster trusting partnerships for safeguarding against violative WPM
- ❖ Consistent self-reporting may lead to mitigating factors in the event of civil penalties or liquidated damages related to violative WPM
- ❖ Those stakeholders may potentially increase business certainty due to their internal controls



Actions to Take if Non-Compliant WPM is Encountered at Your Location

❖ Follow through with the **SIN** principle

- **S** = Secure
- **I** = Isolate
- **N** = Notify



Wood Packaging Material Review

- ❖ Ecological and Economic Impact
- ❖ Purpose and Importance of WPM Regulations
- ❖ Quarantine Pests of Concern
- ❖ Examples of Violative WPM
- ❖ What You Can Do



For More Information Contact:

Department of Homeland Security
U.S. Customs and Border Protection
Office of Field Operations
Agriculture Programs and Trade Liaison

APTL Program Manager - Safeguarding

Office: (202) 344-3298

Address: DHS, CBP, OFO, APTL
1300 Pennsylvania Ave., NW
Room 2.5B
Washington, D.C. 20229



U.S. Customs and
Border Protection

October 2018

